

Informatica Professional Services Resident Program

Benefits

Engaging an Informatica Resident will:

- Create alignment to valuable business outcomes by identifying key data needs and establishing a roadmap to connect them to technical capabilities.
- Maximize the return on your Informatica investment by ensuring alignment with your specific business and technical requirements.
- Lower the risk associated with enterprise software initiatives by marrying advisory guidance customized to your business with extensive experience in architecture, implementation, and best practices.
- Increase your agility by ensuring that your program structure and solution architecture can adapt and scale to meet the future demands of your changing business.
- Shorten ramp-up time on projects and initiatives by providing proven solutions, a proven implementation methodology, and industry best practices.

More than ever the need for digital transformation has accelerated as organizations look to increase productivity, automation, flexibility, and agility. For digital transformation to succeed it must be the strategic focus of the business and must be data-led. Informatica's AI Powered Intelligent Data Management platform makes this transformation possible, but success is not just about the technology.

In addition to technical expertise, knowledge of business drivers and organizational change management are crucial for deploying technology precisely and delivering real business value for the organization. An Informatica Professional Services Resident is your guide to success across the individual steps of your digital transformation journey.

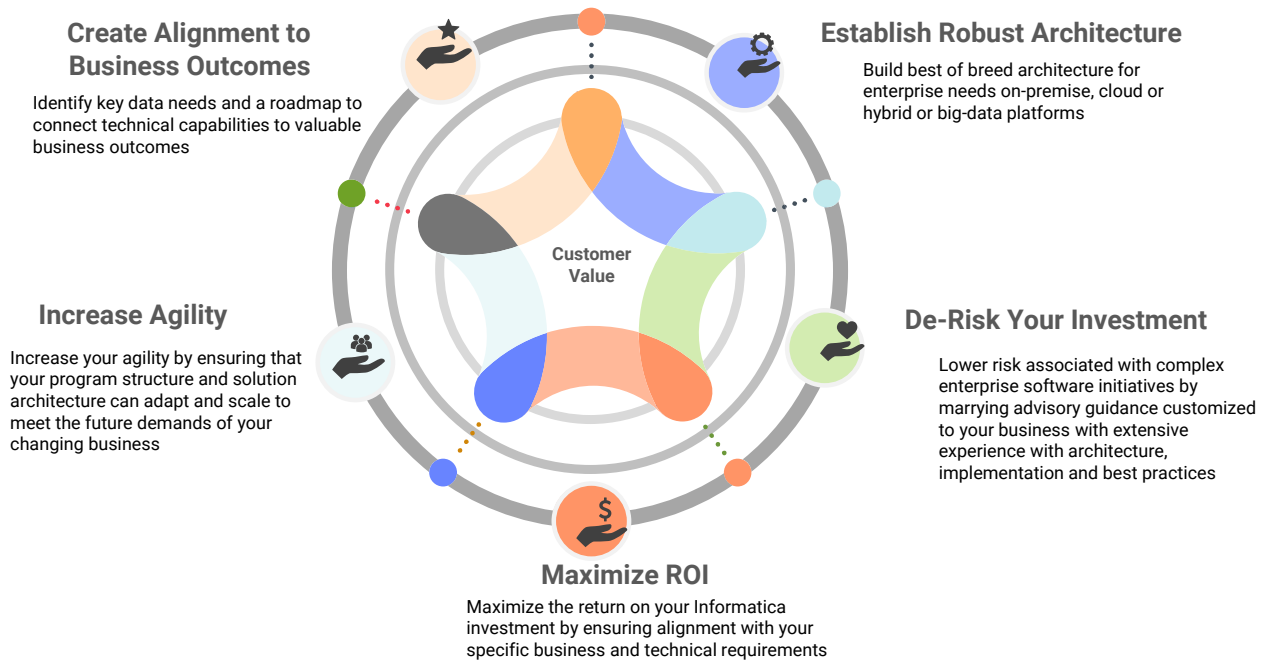
Maximize the Return on Your Informatica Investment

An Informatica Professional Services Resident is a highly skilled consultant with deep and broad experience building, designing, and implementing the Informatica Platform. Resident Architects focus on maximizing the value of your investment across the numerous IT projects, building the foundation of your digital transformation. A Resident Architect provides a consistent engagement point for all aspects of the Informatica Platform as well as an understanding of how each component fits within your overall technical environment.

The Resident is the connection point between your business requirements and the capabilities of the Informatica Platform, maximizing the return on your investment in Informatica technology

Informatica Resident Program

A holistic approach to address top business and technical challenges



Two Types of Resident Roles Available to Ensure Your Success

Resident Architect

- Senior architects designed to act as 'residents' within a client organization.
- Knows the data landscape, technology choices, and culture to drive delivery excellence in the appropriate usage of the Informatica platform within the context of our ecosystem partners.
- Provides guidance on ongoing best practice considerations and recommendations .

Resident Advisor

- Senior business and management focused consultants who act as 'residents' within a client organization.
- Helps build and successfully implement data strategies that address the most important business challenges.
- Connects desired business outcomes to data capabilities and solutions.
- Facilitates the build of a strong data culture, where every employee thinks about data as a strategic asset.

Qualifications of Residents

- Residents are Informatica's most highly skilled and most experienced services professionals with the highest credentials within the organization -- they have certification in all components of the Informatica Platform.
- They are thought leaders, Velocity methodology authors, and overall solution experts.
- They have an average of 15 years of industry practitioner experience and 10 years of experience building, designing, architecting, and implementing Informatica solutions.

About Informatica

Digital transformation changes expectations: better service, faster delivery, with less cost. Businesses must transform to stay relevant and data holds the answers.

As the world's leader in Enterprise Cloud Data Management, we're prepared to help you intelligently lead—in any sector, category or niche. Informatica provides you with the foresight to become more agile, realize new growth opportunities or create new inventions. With 100% focus on everything data, we offer the versatility needed to succeed.

We invite you to explore all that Informatica has to offer—and unleash the power of data to drive your next intelligent disruption.

LEARN MORE

Do It Right the First Time

Contact Informatica Professional Services at ips@informatica.com

Engagement Model

Due to the strategic nature of the Resident's role and broad scope of responsibilities, engagements are available to our customers on a recurring basis. Resident packages are customizable and can be tailored to meet your specific needs.

Activities and Deliverables	Business Advisor	Technical Architect	Integrated Advisory & Architecture
Value Attainment Strategies	✓		
Industry Best Practices	✓		
Business Transformation Alignment	✓		
Change Management Guidance	✓		
Program and Process Design	✓		
Maturity Assessment and Acceleration	✓		
Solution Architecture		✓	
Implementation Best Practices		✓	
Reference Architectures		✓	
Platform Assessment and Capacity Plan		✓	
Platform Modernization Roadmap		✓	
Performance Optimization Guidance		✓	
Data Strategy Assessment and Development			✓
Execution Plan Aligned to Business Outcomes			✓
Data Management Capability Roadmap			✓
Data Governance Strategy			✓
Master Data Management Strategy			✓
Cloud Integration Strategy			✓
Skills Assessment and Enablement Plan			✓

Resident Package Sizing

Silver Package: 500 hours

Silver Residency offering is recommended for supporting Critical Pilots, Assessment, Building Strategic Roadmap, architecting for 1-2 use cases involving 1-3 products to drive towards achieving business outcomes and demonstrating Business Value. Can be included in Software Exhibit A.

Platinum Package: 1500 hours

Platinum Residency Offering is recommended for architecting and delivering business value for 5+ Products or 1-2 complex solutions such as MDM and DG. This level of engagement will ensure business outcomes are delivered. Can be included in Software Exhibit A.



Gold Package: 1000 hours

Gold Residency offering is recommended for architecting and delivering business value for 2-5 Products or 1 complex solution such as MDM for a Single Domain. This level of engagement will ensure business outcomes are delivered. Can be included in License Software Exhibit A.

Custom Package: Tailored Level of Effort

This Residency offering is a fully customized level of engagement and must be estimated by IPS RM and Residency Practitioners. An IPS SOW is required. This can support multi-initiative journeys.



Worldwide Headquarters 2100 Seaport Blvd., Redwood City, CA 94063, USA Phone: 650.385.5000, Toll-free in the US: 1.800.653.3871
www.informatica.com [linkedin.com/company/informatica](https://www.linkedin.com/company/informatica) twitter.com/Informatica

3898 (09/24/2021)

© Copyright Informatica LLC 2017. Informatica and the Informatica logo and are trademarks or registered trademarks of Informatica LLC in the United States and many jurisdictions throughout the world. A current list of Informatica trademarks is available on the web at <https://www.informatica.com/trademarks.html>. Other company and product names may be trade names or trademarks of their respective owners. The information in this documentation is subject to change without notice and provided "AS IS" without warranty of any kind, express or implied.