

June 30, 2020

Integrated Monitoring with Operational Insights

Srinivasa Gopal

Housekeeping Tips



- Today's Webinar is scheduled for **1 hour**
- The session will include a webcast and then your questions will be answered live at the end of the presentation
- All dial-in participants will be muted to enable the speakers to present without interruption
- Questions can be submitted to "All Panelists" via the **Q&A option** and we will respond at the end of the presentation
- The webinar is **being recorded** and will be available to view on our **INFASupport YouTube channel** and **Success Portal**. The link will be emailed as well.
- Please take time to complete the **post-webinar survey** and provide your feedback and suggestions for upcoming topics.

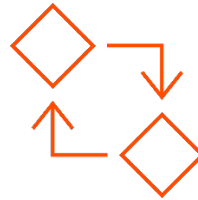
Feature Rich Success Portal



Bootstrap trial and
POC Customers



Enriched Customer
Onboarding
experience



Product Learning
Paths and Weekly
Expert Sessions



Informatica
Concierge with
Chatbot integrations



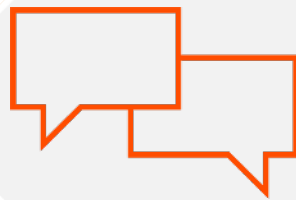
Tailored training and
content
recommendations

More Information



Success Portal

<https://success.informatica.com>



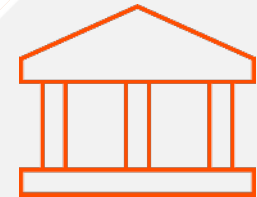
Communities & Support

<https://network.informatica.com>



Documentation

<https://docs.informatica.com>



University

<https://www.informatica.com/in/services-and-training/informatica-university.html>

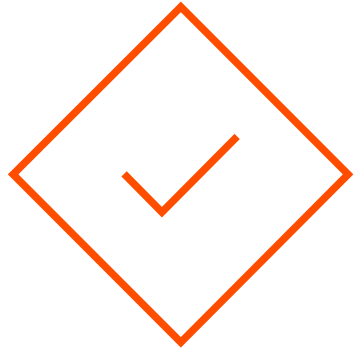
Safe Harbor

The information being provided today is for informational purposes only. The development, release, and timing of any Informatica product or functionality described today remain at the sole discretion of Informatica and should not be relied upon in making a purchasing decision.

Statements made today are based on currently available information, which is subject to change. Such statements should not be relied upon as a representation, warranty or commitment to deliver specific products or functionality in the future.

Agenda

- Introduction to Operational Insights
- UseCases
- Architecture
- Demo
- Q&A



Introduction to Ops Insights

Operational Challenges

- Interface complexity
 - Multiple products with different operational tools
 - Hybrid product environment with IICS and multiple Informatica domains
- Lack of insights to handle
 - Scheduling complexity
 - Capacity planning
 - Troubleshooting
 - Performance tuning

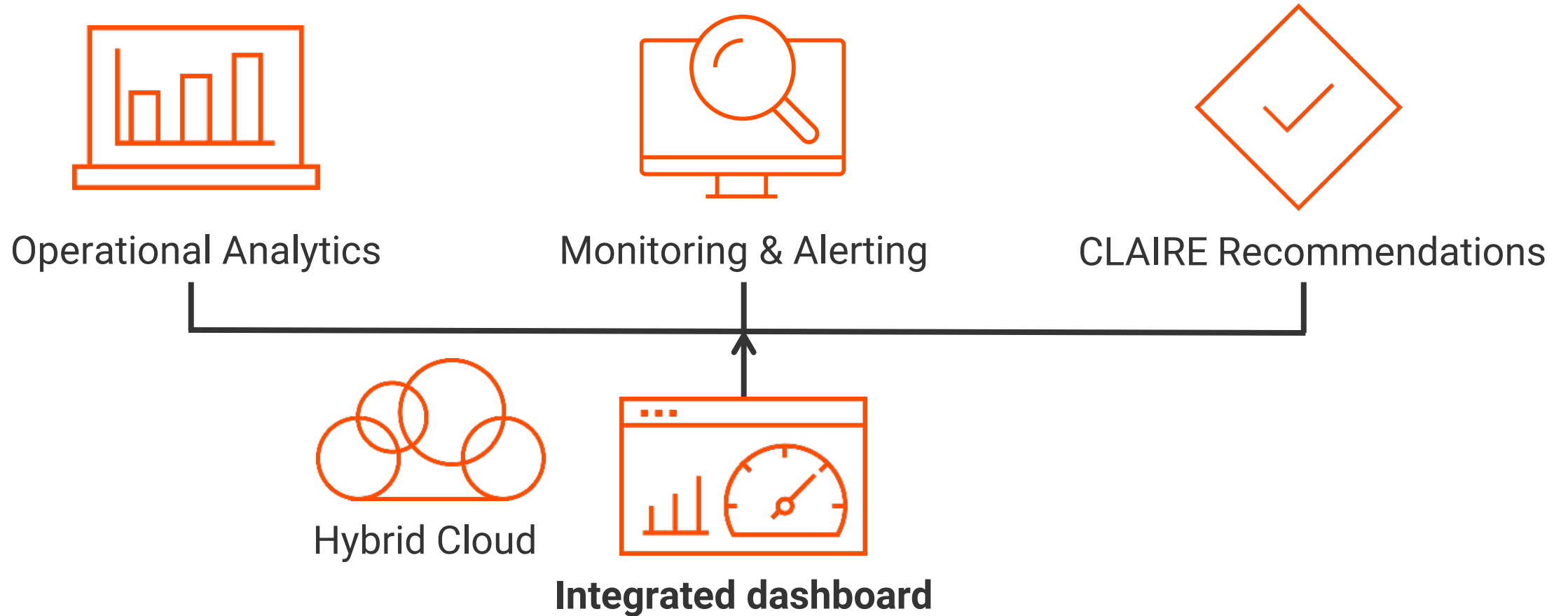
Operational Insights | Vision

Be the industry-leading operational-data management platform so that customers can have a “single pane of glass” across on-premises and cloud deployments

Goal

Increase operational efficiency of Informatica deployments by providing Predictive Analytics, Actionable Recommendations and Integrated Monitoring

Operational Insights – Functionality



Benefits

- Lower TCO and operational efficiency
- Integrated Operations Management across geographies, domains, products and services (PC, DEI, DQ, CDI etc.)
- Assess existing project utilization and plan for future capacity
- Reduce the initial investigation time of operational issues
- ML based Anomaly detection for PC to catch problematic job runs proactively
- Value added best practice recommendations
- Zero-to-miniscule impact on upgrade while enjoying new features rolling out every month

* PC – PowerCenter, IDQ – Informatica Data Quality, DEI – Data Engineering Integration, EDC – Enterprise Data Catalog, CDI – Cloud Data Integration

Call to Action

Customer Type	How to get Operational Insights
IICS customers	Automatically get Operational Insights for Cloud Services
IICS customers with on-premise products	Contact Global Customer Support to enable Operational Insights for On-premises products base edition in your cloud org.
Customers with only on-premise products	Sign up now for free Operational Insights for on-premises products base edition subscription! https://www.informatica.com/subscriptions/operational-insights.html



On-Premise Products UseCases

Operational Insights for On-Premise Products

	Base Edition (Free)	Advanced Edition (Paid)	Applies to
No. of on-premises Domains	10	Based on number of Production CPU-Cores	PC,DQ,DEI
Data retention	30 days	1 year	PC,DQ,DEI
Secure Agents included for OI data collection	1	1 per PROD env and only for OI data collection	PC,DQ,DEI
No. of Repositories	unlimited	unlimited	PC,DQ,DEI
Job runtime analytics	Y	Y	PC,DQ, DEI
Resource utilization analytics	Y	Y	PC,DQ, DEI, EDC
Job error remediation recommendations	Y	Y	PC
Domain health monitoring and email alerting	Y	Y	PC,DQ, DEI, EDC
Projects View of Operational Data		Y	PC,DQ, DEI
Job Alerting(completed workflows)		Y	PC
Grid auto-scale(on AWS)		Y	PC
CLAIRE Job alerting on anomalous run job behavior		Y	PC
Execute custom script as an alert action		Y	PC,DQ, DEI
Custom role creation using fine grained privileges		Y	PC,DQ, DEI
Single sign-on with SAML support		Y	PC,DQ, DEI

* PC – PowerCenter, DQ – Informatica Data Quality, DEI – Data Engineering Integration, EDC – Enterprise Data Catalog

PowerCenter Lift & Shift

- PowerCenter AMIs on AWS or Azure Marketplace can help with quick initial deployment
- Operational Insights can help Lift & Shift use cases by
 - Integrated dashboard for monitoring
 - Compare project/workflow performance
 - Auto-capacity management on AWS with Auto-scale feature

Personas for Operational Insights

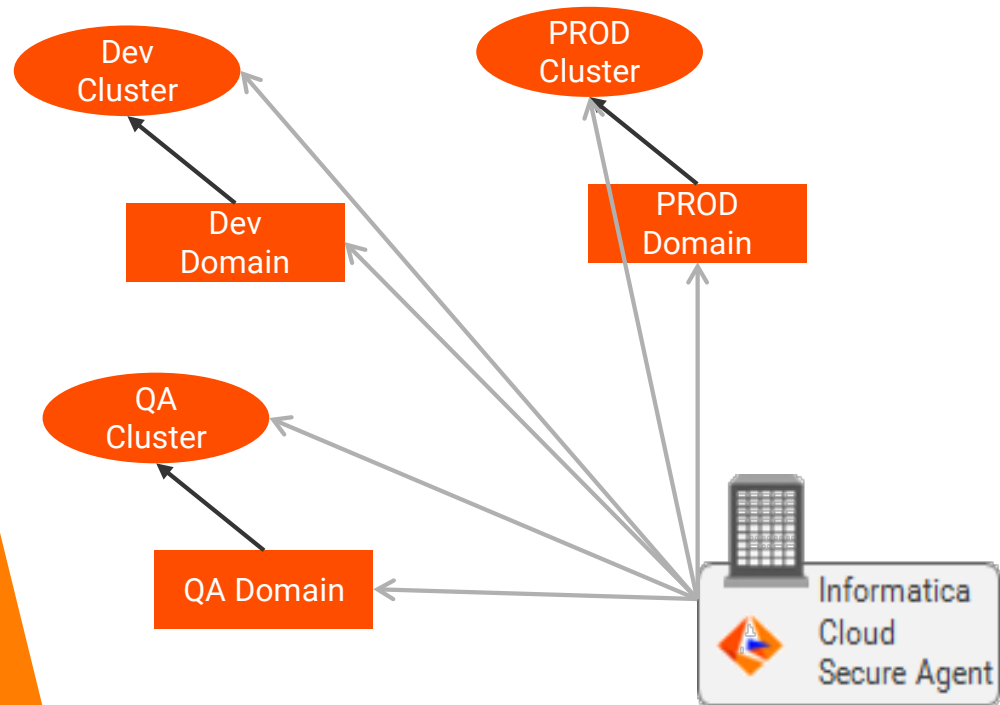
- Informatica Platform Shared Service Managers
- Administrators
- Data Architects
- Operations team

What information is collected from PowerCenter?

- Operational metadata
 1. Job run statistics from Repository (once an hour)
 2. Resource utilization statistics from Repository (once an hour)
 3. Domain health (every 5 mins)
 4. Domain configuration (once a day)

What information is collected from DEI/DEQ?

Customers Big Data environments



- Operational metadata (No data), configure collection in the cloud
 1. Job run statistics from Model Repository (once an hour)
 2. Cluster resource utilization statistics from Big Data cluster for running Informatica jobs (once an hour)
 3. Resource utilization statistics from Model Repository (once an hour)
 4. Domain health (every 5 mins)
 5. Domain configuration (once a day)



On-premises | Cloud

What information is collected from IDQ?

- Operational metadata
 1. Job run statistics from Model Repository (once an hour)
 2. Resource utilization statistics from Model Repository (once an hour)
 3. Domain health (every 5 mins)
 4. Domain configuration (once a day)

All Infrastructure – Domains View

Domains (4)

Register Domain

✓ HR_DOM_DQ_API | Data Quality

TEST

Nodes

1 ✓ 2 ✗

Services

5 ✓ 16 ✗

✓ RETAIL_SALES_API | PowerCenter

STAG PC

Nodes

1 ✓ 2 ✗

Services

5 ✓ 16 ✗

✓ PARTNERSALES_USEAST | PowerCenter

TEST CloudBurst

Nodes

1 ✓ 2 ✗

Services

6 ✓ 7 ✗

✓ PROCUREMENT_DOM_BDM_EU | Big Data

TEST BDM

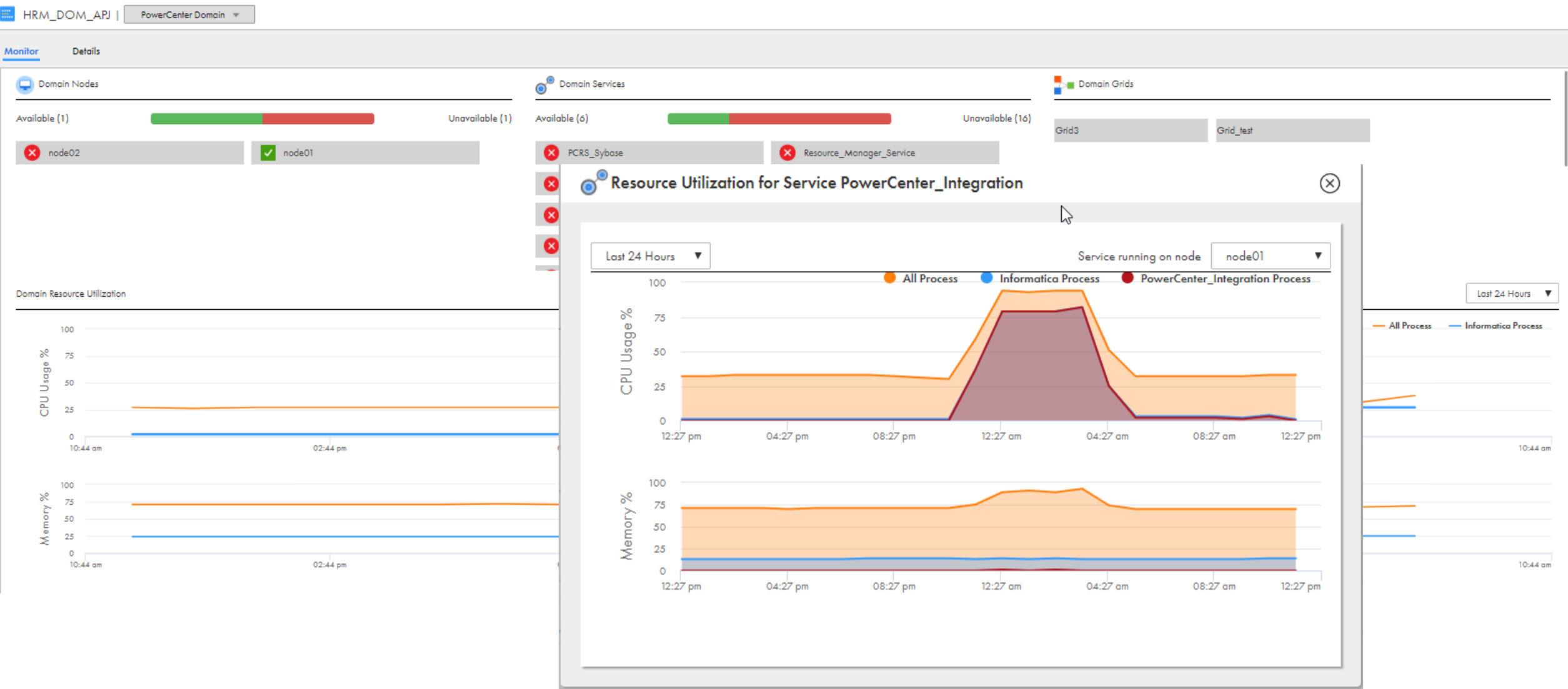
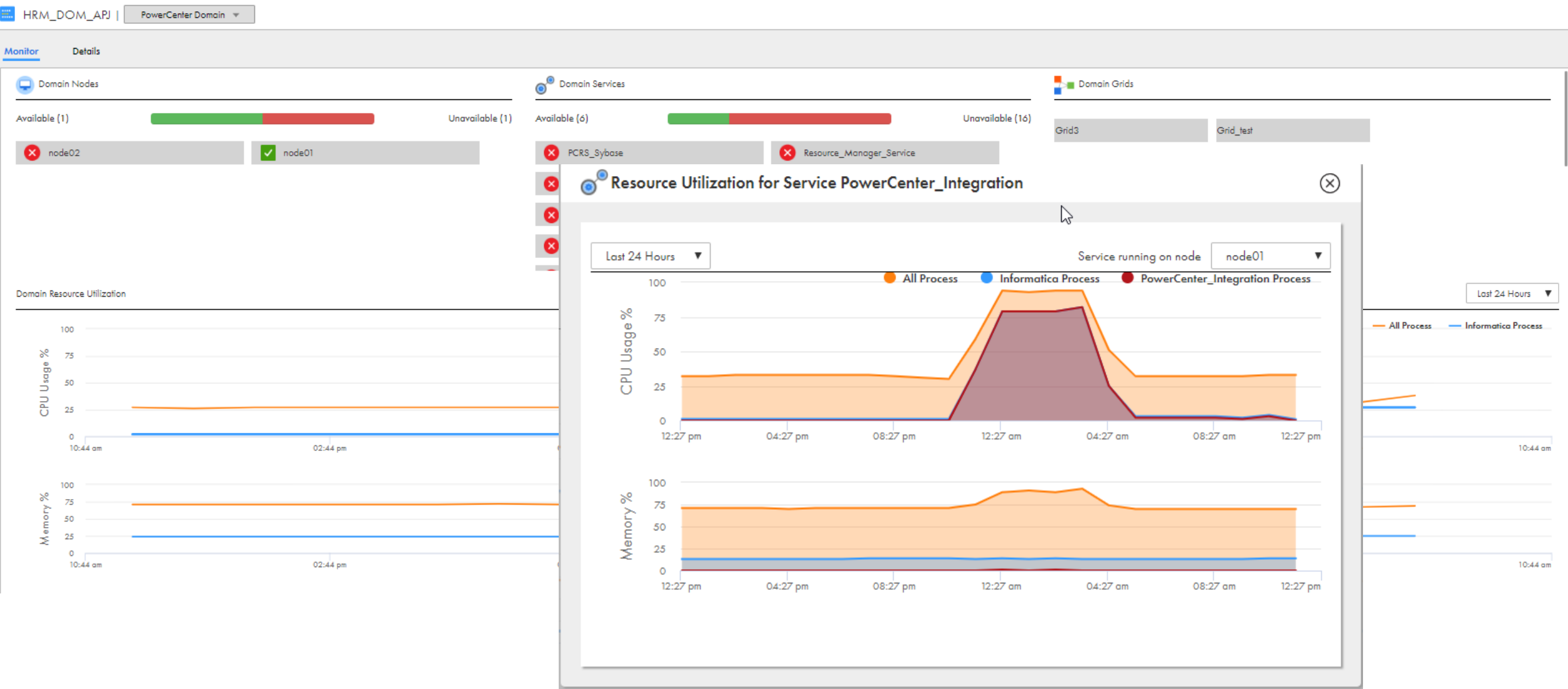
Nodes

1 ✓ 2 ✗


Services

3 ✓ 18 ✗

PowerCenter Infrastructure– Domain Nodes, Services, Grids



PowerCenter Infrastructure – Alert Settings

 All Infrastructure

Overview

Alert Settings

Resources

Domains

HR_DOM_DQ_API

RETAIL_SALES_API

PARTNERSALES_USEAST

PROCUREMENT_DOM_BDM_EU

Secure Agents

2k12openstvm600

invlx70rnd01.informatica.com

invr12cloud04

Alert settings for Domain : HR_DOM_DQ_API

Domain Related Alerts

☒

The domain is unavailable for a duration of 15 minutes.

☒

A collector running in the domain is unavailable for the last 3 collections.

Domain Service Related Alerts

☒

A service running in the domain is unavailable for a duration of 15 minutes.

☒

CPU usage by a service running in the domain exceeds90% for a duration of 1 hour

☒

Memory usage by a service running in the domain exceeds90% for a duration of 1 hour

Domain Node Related Alerts

☒

A domain node is unavailable for a duration of 15 minutes.

☒

CPU usage by a domain node exceeds90% for a duration of 1 hour

☒


Memory usage of domain node crosses90% for a duration of 1 hour

☒ Email Recipients

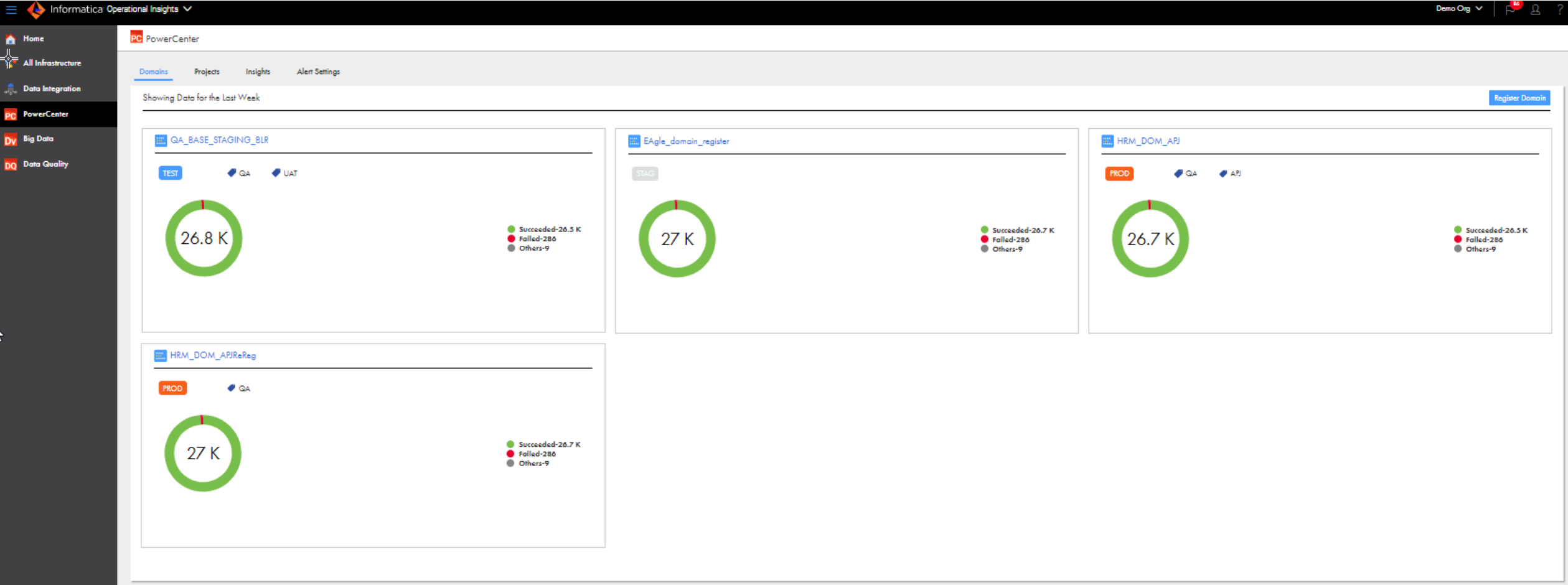
oidemo

☐ Run Custom Script

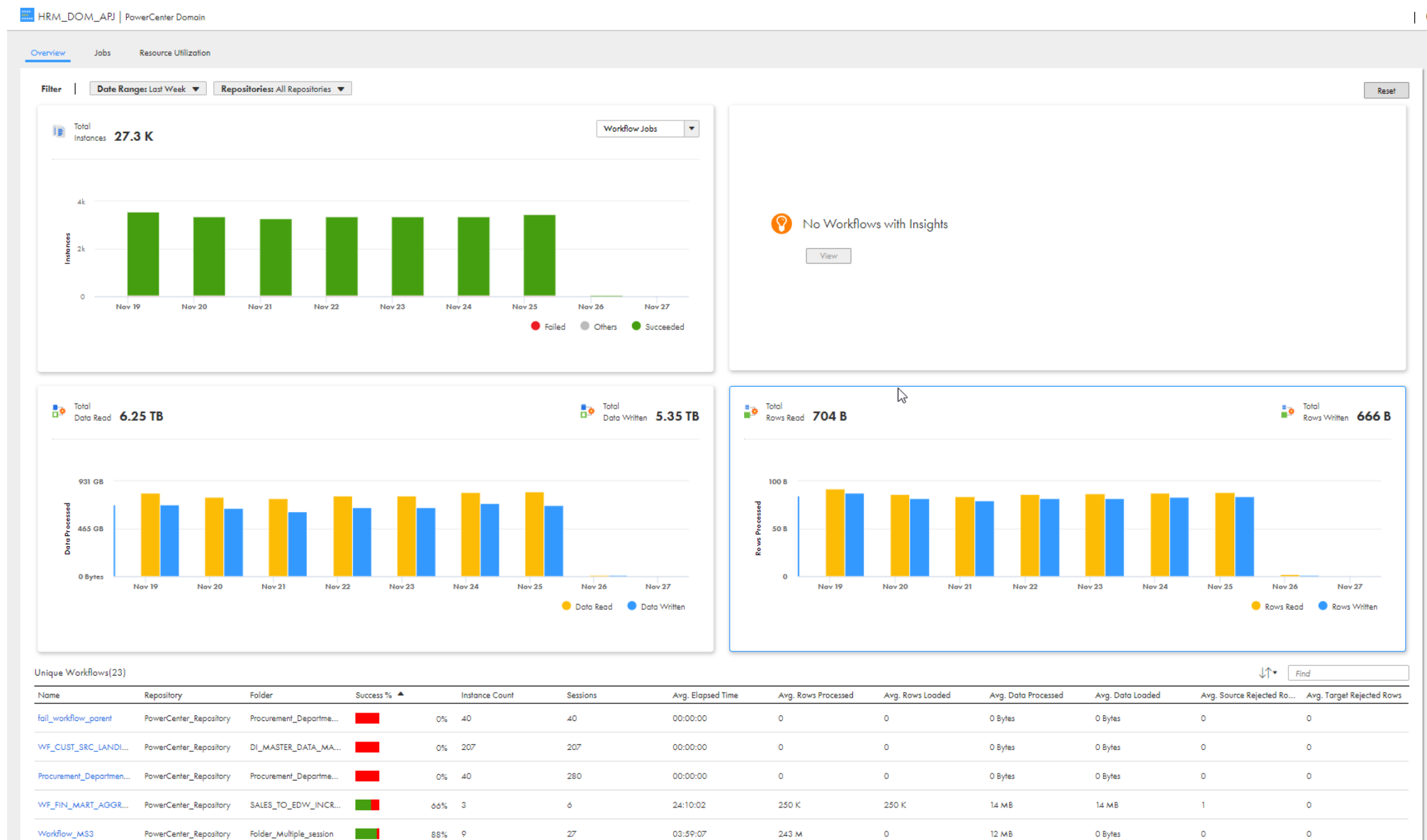
Add Script Location

 Secure Agent should have execute permissions on the above script file

On-Premises Domains – Jobs Summary



PowerCenter Domain – Jobs Aggregate View



PowerCenter Domain – Workflow Jobs View

Filter | **Date Range:** Last Week ▼ **Repositories:** All Repositories ▼ **Job Status:** SUCCEEDED, FAILED, A... ▼

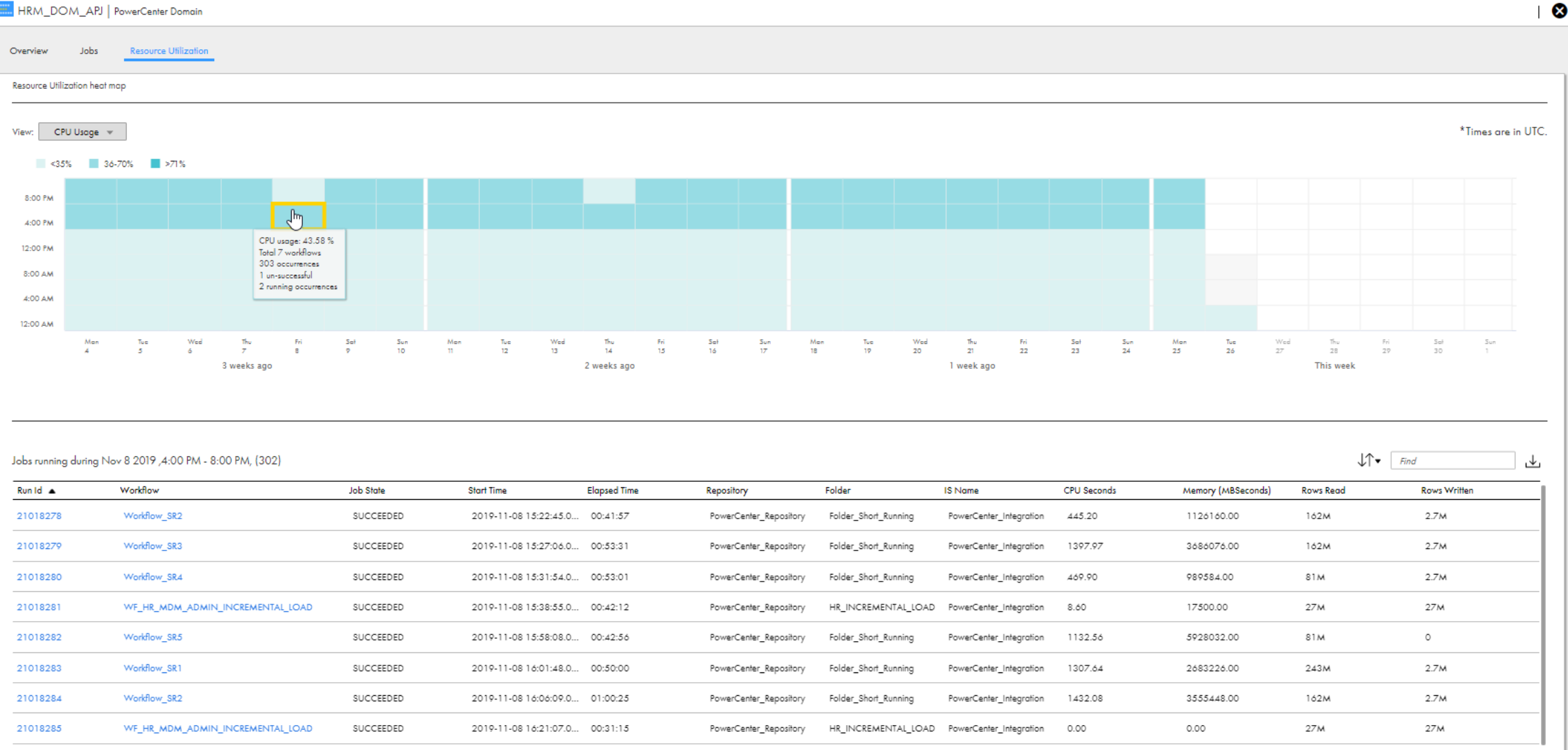
Reset

Workflow Instances(27310)

Find

Status	Name	Workflow Run ID	Start Time ▲	Elapsed Time	Rows Processed	Rows Loaded	Data Processed	Data Loaded	User	IS Name
✓	Workflow_MS2	21050515	Nov 18, 2019 04:09 AM	02:44:12	243 M	0	12 MB	0 Bytes	Administrator	PowerCenter_Integration
✓	Workflow_MS3	21050516	Nov 18, 2019 04:13 AM	04:03:59	243 M	0	12 MB	0 Bytes	Administrator	PowerCenter_Integration
✓	WF_HR_MDM_ADMIN_INC...	21050518	Nov 18, 2019 05:02 AM	04:11:20	27 M	27 M	225 MB	150 MB	Administrator	PowerCenter_Integration
✓	WF_HR_MDM_ADMIN_INC...	21050521	Nov 18, 2019 09:13 AM	00:00:16	27 M	27 M	225 MB	200 MB	Administrator	PowerCenter_Integration
✓	WF_HR_MDM_ADMIN_INC...	21050522	Nov 18, 2019 09:13 AM	00:00:16	27 M	27 M	257 MB	225 MB	Administrator	PowerCenter_Integration
✓	WF_HR_MDM_ADMIN_INC...	21050523	Nov 18, 2019 09:14 AM	00:00:18	27 M	27 M	180 MB	180 MB	Administrator	PowerCenter_Integration
✓	WF_HR_MDM_ADMIN_INC...	21050524	Nov 18, 2019 09:14 AM	00:00:16	27 M	27 M	225 MB	200 MB	Administrator	PowerCenter_Integration
✓	WF_HR_MDM_ADMIN_INC...	21050525	Nov 18, 2019 09:14 AM	00:00:16	27 M	27 M	257 MB	257 MB	Administrator	PowerCenter_Integration
✓	WF_HR_MDM_ADMIN_INC...	21050526	Nov 18, 2019 09:14 AM	00:00:16	27 M	27 M	257 MB	257 MB	Administrator	PowerCenter_Integration
✓	WF_HR_MDM_ADMIN_INC...	21050527	Nov 18, 2019 09:15 AM	00:00:16	27 M	27 M	257 MB	225 MB	Administrator	PowerCenter_Integration
✓	WF_HR_MDM_ADMIN_INC...	21050528	Nov 18, 2019 09:15 AM	00:00:16	27 M	27 M	257 MB	225 MB	Administrator	PowerCenter_Integration
✓	WF_HR_MDM_ADMIN_INC...	21050529	Nov 18, 2019 09:15 AM	00:00:14	27 M	27 M	300 MB	300 MB	Administrator	PowerCenter_Integration
✓	WF_HR_MDM_ADMIN_INC...	21050530	Nov 18, 2019 09:16 AM	00:00:16	27 M	27 M	257 MB	225 MB	Administrator	PowerCenter_Integration

PowerCenter Domain – Resource Utilization



Operational Insights for PC - CLAIRE Anomaly Detection

HRM_DOM_APJReReg | PowerCenter Domain

HRM_DOM_APJReReg | PowerCenter Domain

Overview

Jobs

Resource Utilization

Filter

Date Range: Last Month

Repositories: All Repositories

Job Status: SUCCEEDED, FAILED, A...

Reset

Anomalous behavior has been detected for the jobs listed below.

Clear

Workflow Instances(1)

Find

Status	Name	Workflow ...	Start Time ▲	Elapsed Time	Rows Proce...	Rows Loaded	Data Proce...	Data Loaded	User	IS Name
✓	Workflow_...	21073838	Nov 24, 2...	00:44:42	162 M	2.7 M	70 MB	33 MB	Administrat...	PowerCent...

1 - 1 of 1

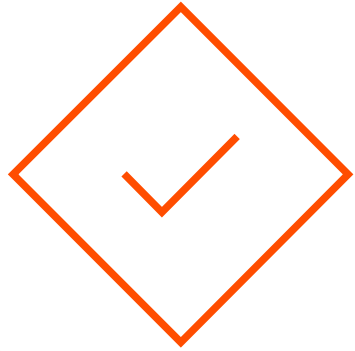
< 1

Anomalous Behavior

The Data Processed for this job run is higher than usual.

Show all Anomalies for this Job

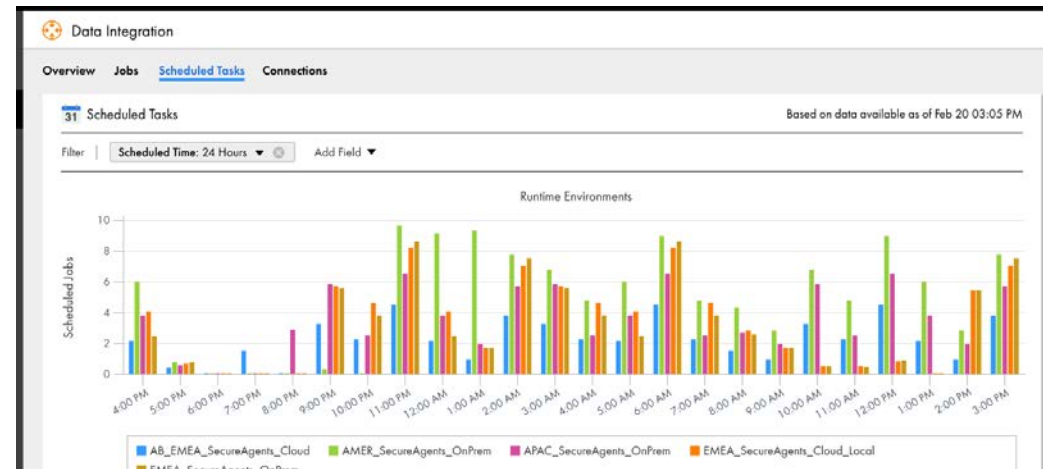
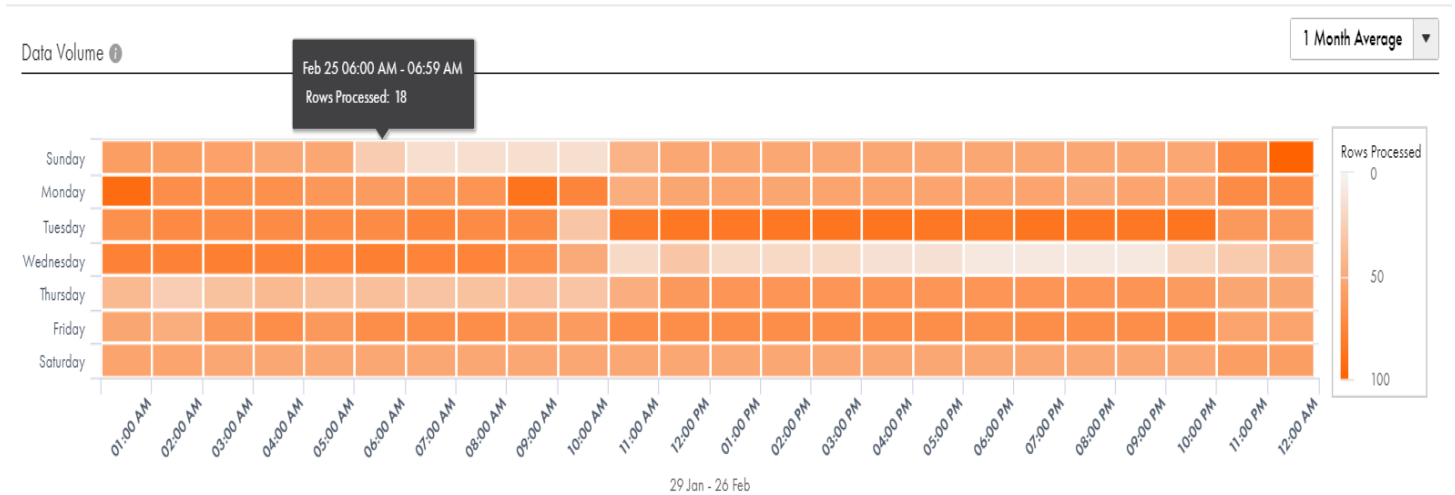
Items Per Page: 25



Cloud Data Integration UseCase

Jobs heat map and scheduled jobs

- Quickly identify the peak time with the jobs heat map.
- Heat map helps you analyze the impact on your integration jobs and optimize resources and schedules.
- View of all your upcoming scheduled jobs for the next 24 hours to detect any overloads on our runtime environments.



Historical job runs

- Visualize the previous runs of any integration job to spot anomalies in the task run.
- Historical job runs available for the last 30 days.
- Export the data to csv for further analytics and reporting needs.



Jobs | Based on data available as of Feb 26 12:00 AM | Filter | End Time: Last 24 hours | Add Field | Export

Job	Status	Asset	Asset Type	Runtime Envir...	Secure Agent	Rows Processed	Success Rows	Duration	Parent Asset ...
MappingTa...	Failed	MappingTask1 - C	Mapping Task	INVR1282811	SecureAgent1	0	0	7 seconds	
MappingTa...	Warning	MappingTask22	Mapping Task	Informatica Clo...	jp-10-103-66-...	3	0	8 seconds	Taskflow4
Replication	Failed	Replication Task2	Replication Task	INVR1282811	n/a	0	0	25 seconds	
MappingTa...	Success	MappingTask12 -	Mapping Task	INVR1282811	SecureAgent1	5	5	17 seconds	Taskflow4
EightRows...	Failed	EightRows	Replication Task	INVR1282811	SecureAgent1	0	0	8 seconds	Replication Task2

Exports

againMozTest

Feb 26 2020 12:07 AM

confirmTest

Feb 26 2020 12:07 AM

testmoz

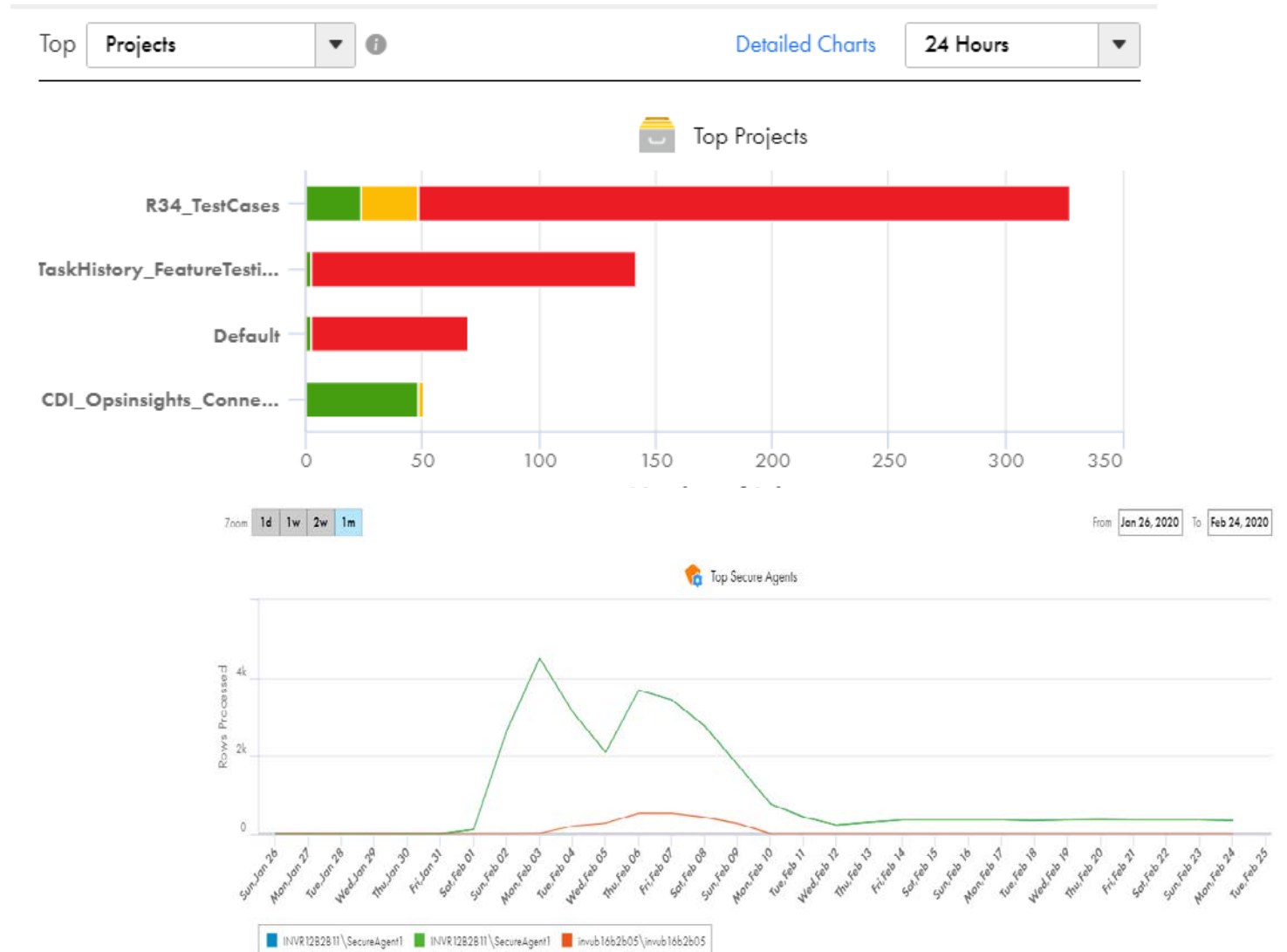
Feb 26 2020 12:06 AM

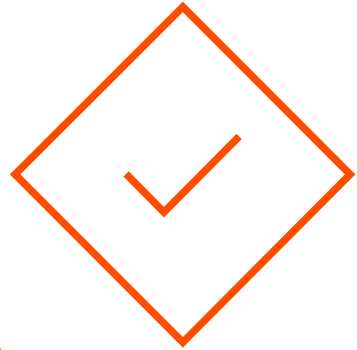
0

Feb 25 2020 04:08 AM

Project level and Secure Agent view of activity

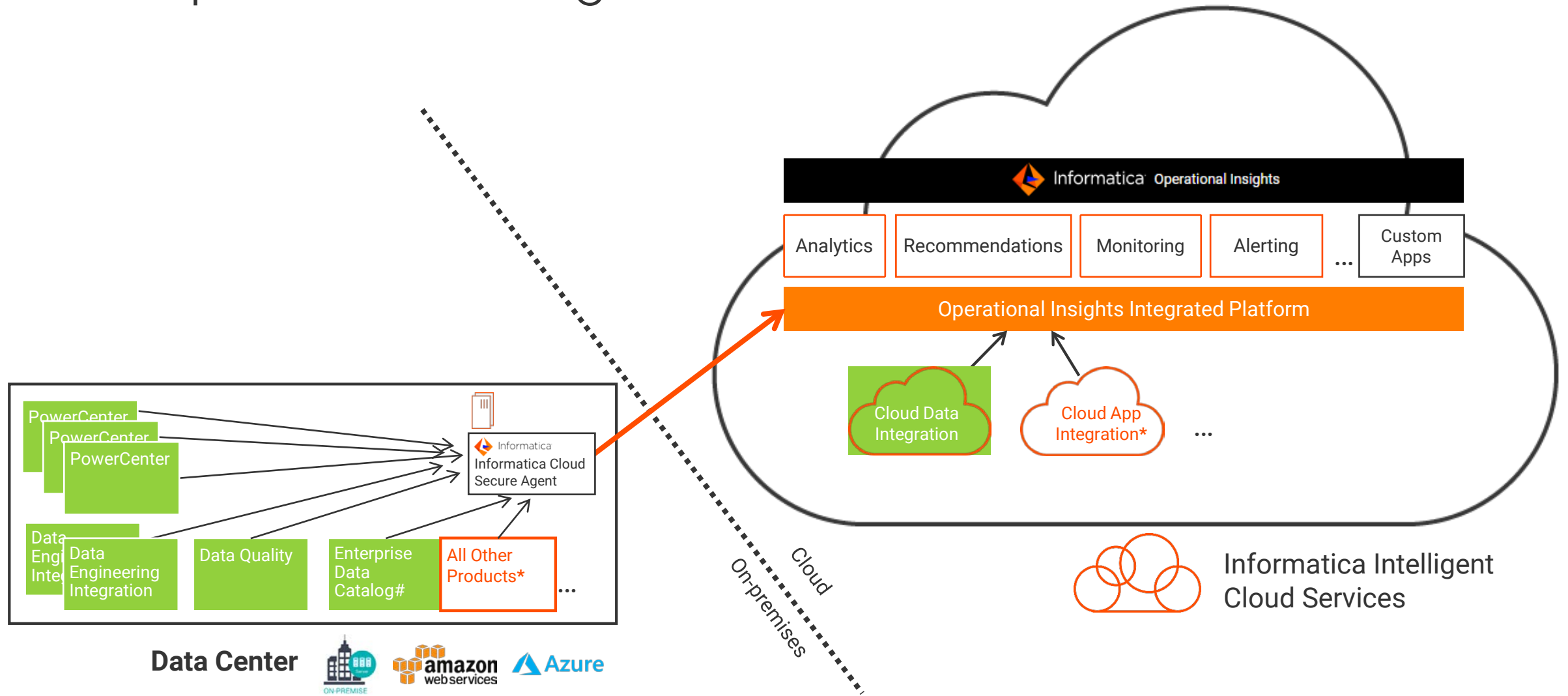
- Dashboards that provide project/folder level overview of the data integration jobs.
- Quickly identify business units that have job failures and need attention.
- Compare the load on your secure agents to optimize resource and scheduling of the integration jobs.

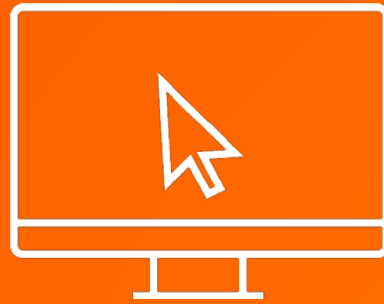




Architecture

How Operational Insights works ?





Demo

References

- Ops Insights Website : [Click Here](#)
- How to Register to Ops Insights: [Click Here](#)
- How to Download and Install Secure Agent: [Click Here](#)
- Introduction to Ops Insights: [Click Here](#)
- Understanding the Ops Insights Overview Page: [Click Here](#)
- Ops Insights for Big Data Management Blog : [Click Here](#)
- Using Resource Usage Heatmap: [Click Here](#)
- How to Register PowerCenter Domain: [Click Here](#)
- How to Register for Data Engineering Integration/Quality Domain: [Click Here](#)
- Analyzing Big Data Job Performance: [Click Here](#)
- Analyzing Big Data Domain Resource Usage: [Click Here](#)
- How to Register Domain for Ops Insights: [Click Here](#)



Thank You!
