

# How to Start and Access a PowerCenter Cloud Edition Instance

## Introduction

The PowerCenter Cloud Edition (PCE) instance contains the PowerCenter server and client components. You can use the AWS Management Console to start a PCE instance. After you start the instance, use Remote Desktop Connection to remotely access the instance and log in to the PowerCenter Administration Console and the PowerCenter Client.

This document provides instructions on how to start a PowerCenter Cloud Edition instance on EC2 running on Windows.

## Starting the PowerCenter Cloud Edition Instance

Before you can start a PowerCenter instance, you must set up accounts for the following Amazon services:

- Amazon Web Services
- Amazon EC2

For more information, see the instructions for setting up Amazon accounts at [Setting Up an Account](#).

Use the AWS Management Console to select and start a PCE instance. The first time you start an instance, create a key pair for authentication and save the key file to your local machine. The security level for your browser must be set to allow you to download files. When you access the PCE instance, you must use the contents of the key file to generate the password you use to log in to the instance through Remote Desktop Connection.

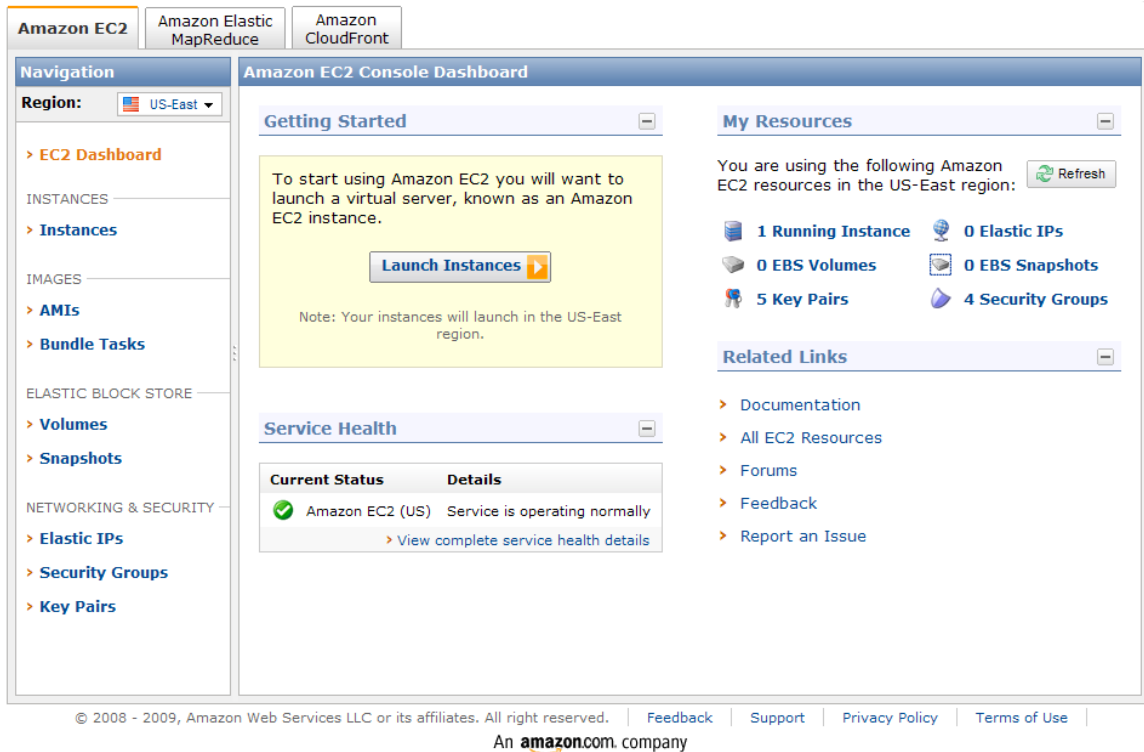
When you start an instance, you must also select a security group that defines the access rules for the instance. A security group provides an additional layer of control of access to the instance. If you do not want to use the default security group for the EC2 instance, you can create a security group and configure the connections allowed for the group.

For more information about starting an EC2 instance, see the Using Amazon EC2 section of the [EC2 user documentation](#).

### To start the PCE instance:

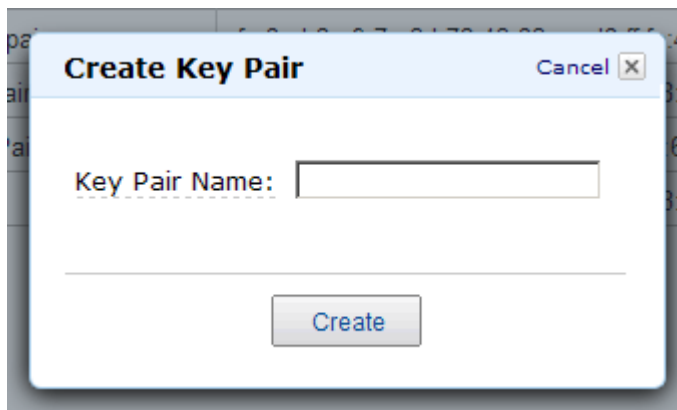
1. Open a browser and go to the AWS Management Console web site:  
`http://aws.amazon.com/console`
2. Click Sign in to the AWS console and sign in with your AWS account.

The AWS Console displays the EC2 Console Dashboard.



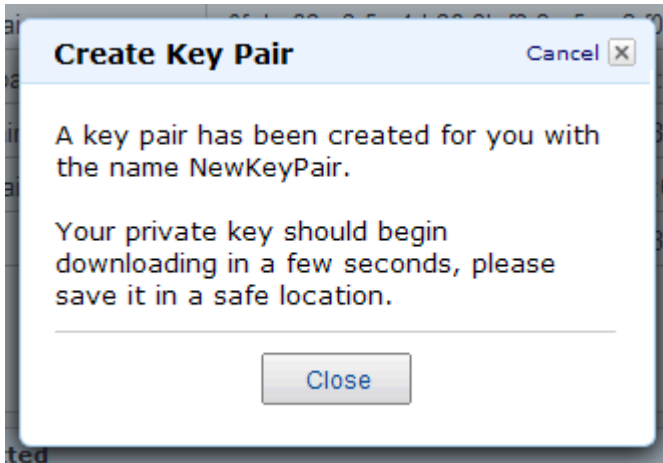
If this is the first time you are starting an instance, you must create a key pair.

3. In the Networking & Security section of the Navigation panel, click Key Pairs.
4. On the Key Pairs panel, click Create Key Pair.
5. Enter a name for the key file and click Create.

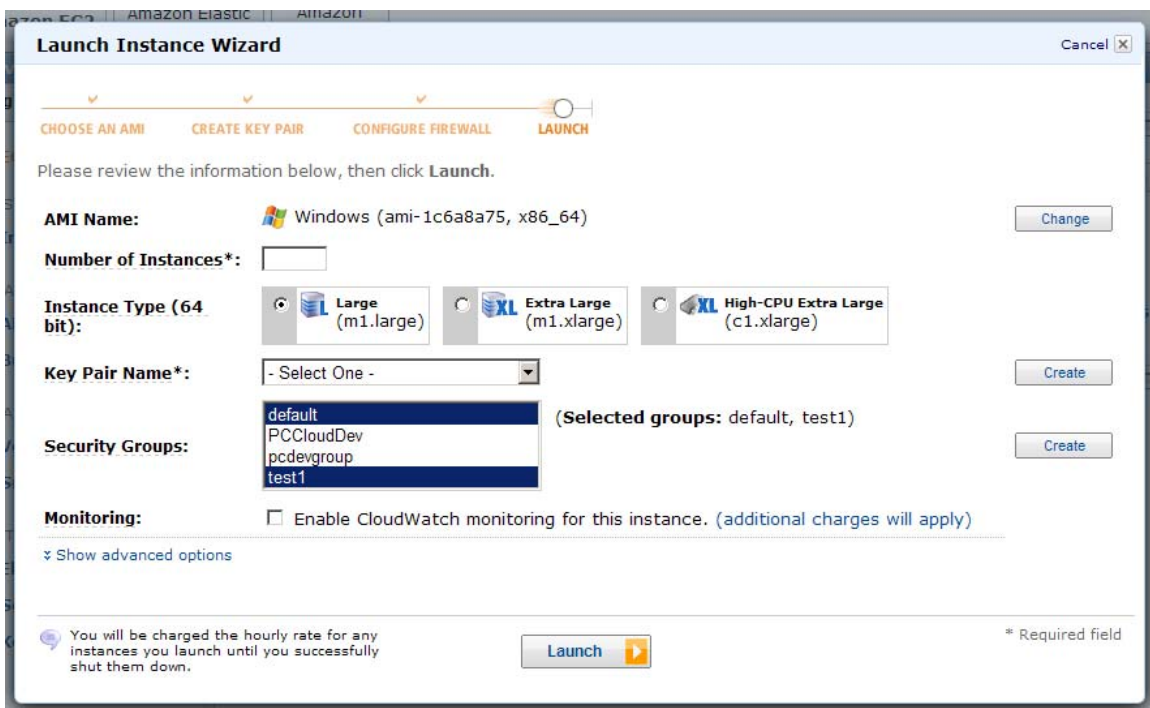


6. Save the key file to a secure location.

The security level for your browser must be set to allow you to download files. The key file has a .pem extension. The Create Key Pair window displays the message that the file is downloaded.



7. Close the Create Key Pair dialog box.
8. On the AWS console Navigation panel, click EC2 Dashboard.
9. Click Launch Instances.
10. Select the instance that you want to launch and click Launch.



11. On the Launch Instance Wizard window, select the AMI settings for the instance you want to launch.  
Typically, you would launch one instance of a large instance type. If you require a more robust environment, you can select more instances or an extra large instance type. For more information about the instances, see the Amazon EC2 documentation on [AMIs and instances](#).
12. When you select the key pair name, verify that you have access to the key file.
13. Click Launch.
14. The Launch Instance Wizard window displays the message that the instance is launching.
15. Click View your instances on the instances page.

The My Instances page displays a list of your instances and their statuses. The instance you launch can take some time to start. Click Refresh to update the status.

## Accessing the PowerCenter Cloud Edition Instance

You use the Remote Desktop Connection utility to remotely connect to the PCE instance. Remote Desktop Connection is available on most Windows machines.

You must have access to the key file generated on the AWS Management Console. You use the contents of the key file to generate the password to connect to the instance through Remote Desktop Connection.

For more information about connecting to an AMI instance, see the Using Amazon EC2 section of the [EC2 user documentation](#).

### To access the PCE instance remotely:

1. Sign in to the AWS console.
2. In the Instances section of the Navigation panel, click Instances.
3. Select the instance you want to access.
4. Click Instance Actions > Get Windows Admin Password.

**Retrieve Default Windows Administrator Password** Cancel X

To access this instance remotely (e.g., Remote Desktop Connection), you will need your Windows Administrator password. A default password was created when the instance was launched and is available encrypted in the system log.

To decrypt your password, you will need your key pair for this instance. Simply copy & paste the contents of your private key file into the text box below, then click **Decrypt Password**.

**Instance:** i-83f837eb

\* Required field

**Encrypted Password:** NLig6MjvZUh1EmzwbB6103/l/mNkr5lHi0y8d1+6TiH86...

**Key Pair:** mjKeyPair.pem  
Note: You were prompted to download and save this when you created your key pair.

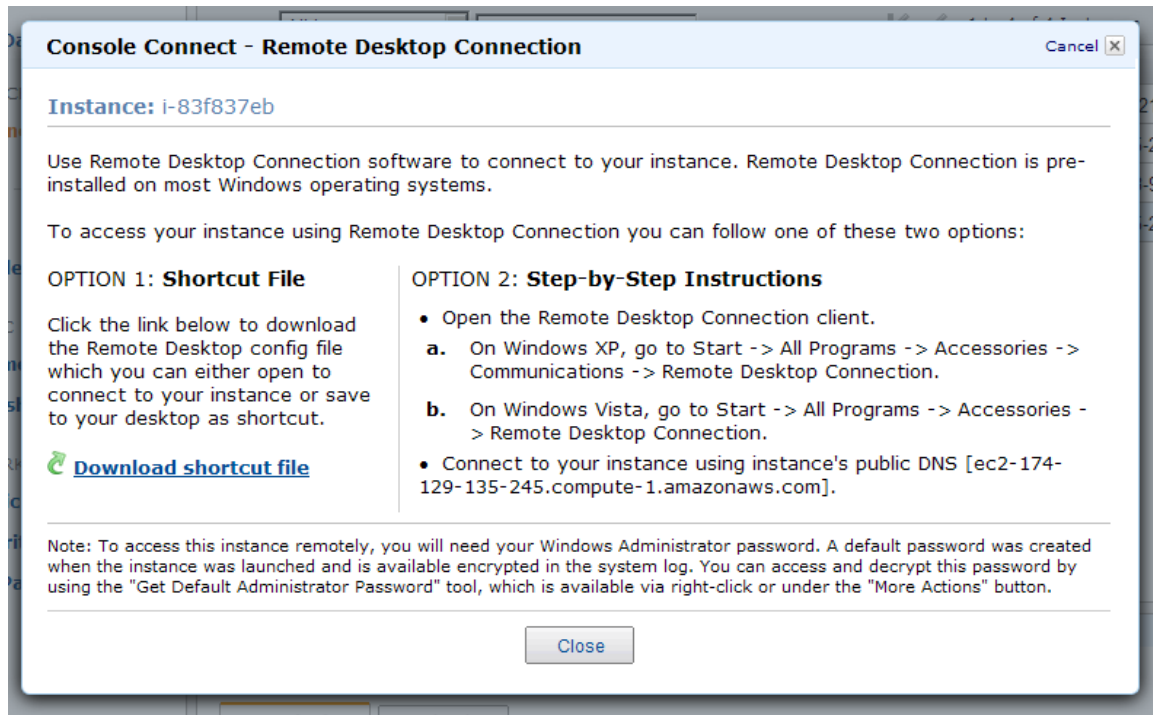
**Private Key\*:**

Please include the entire text, including the Begin and End lines (Ex: "-----BEGIN RSA PRIVATE KEY-----")

**Decrypt Password**

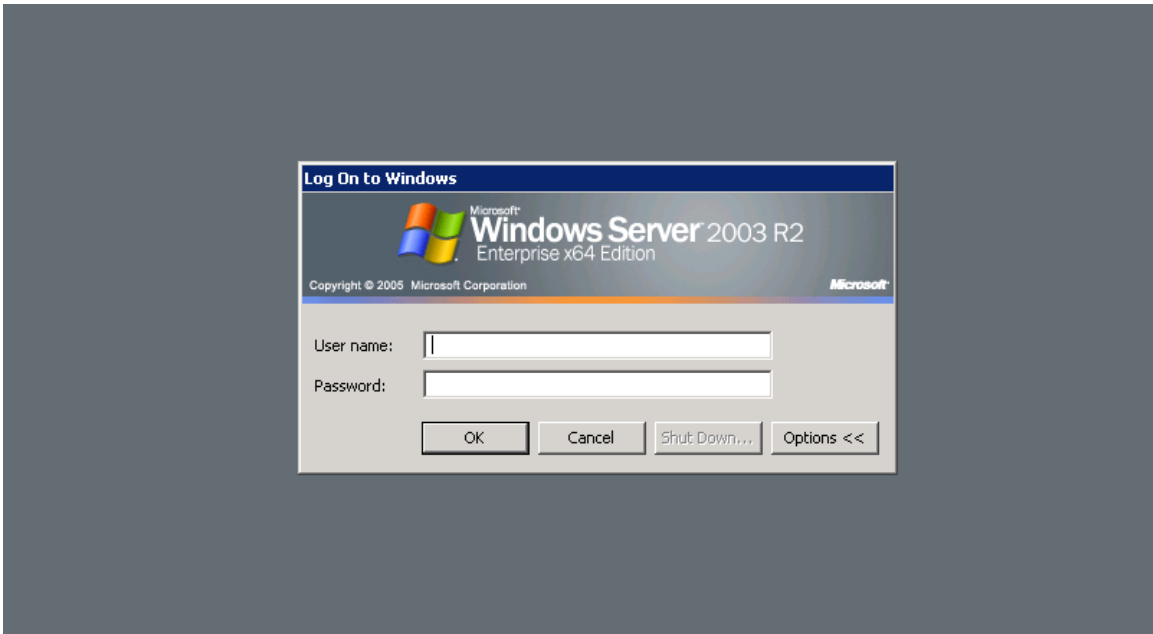
The Retrieve Default Windows Administrator Password page shows the name of the key pair required. You must have access to this key file to get the password for your instance.

5. Locate the key file that matches the key pair named on the page.
6. Use a text editor to open the file.
7. Copy the content of the file and paste it on the Private Key entry box.
8. Click Decrypt Password.
9. Take note of the user name and password and click Close.
10. On the My Instances page, verify that the instance is selected and click Instance Actions > Connect.



Read the instructions on the Console Connect window and select the procedure you want to use to connect to the instance. You must use the Remote Desktop Connection utility to connect to the instance.

11. Use one of the procedure options to start Remote Desktop Connection.



12. Enter the user name and password from the Retrieve Default Windows Administrator Password page.  
 After you log in, you can change the administrator password. If you change the password, you do not need to use the key file.

## After You Connect to the PCE Instance

To use PowerCenter, log in to the PowerCenter Administration Console with the domain administrator user account. Log in to the repository with the repository administrator user account. You can get online help on the PowerCenter Administration Console and PowerCenter Client for assistance in using the product.

The PCE instance has the following configuration:

Property	Value
Directory	C:\InformaticalPowerCenter8.6.1
Gateway host	Host name: PCCloud Port: 6001
Node name	node01_PCCloud
Domain name	Domain_PCCloud
Domain administrator	User name: Administrator Password: Administrator You can use this user account to log in to the PowerCenter Administration Console.
Repository Service	Service name: rep_PCCloud Repository administrator user name: Administrator Repository administrator password: Administrator You can use the repository administrator account to log in to the PowerCenter Client.
Integration Service name	DI_PCCloud

The PCE instance contains a number of mapping examples that you could use as a model to develop your own mappings. You can view and run the following mappings in the PowerCenter Client:

- **SimpleDB demo mappings.** A set of mappings that demonstrate how you can access the Amazon SimpleDB service from PowerCenter. Amazon SimpleDB is a web service that provides core database functions of data indexing and querying in the cloud.

The SimpleDB demo mappings use the PowerCenter parameter file named *SimpleDB\_Param.txt* to connect to the SimpleDB service. You must add your AWS security key values to the parameter file. The parameter file is located in the following directory:

```
C:\Informatica\PowerCenter8.6.1\server\infa_shared\ParameterFiles\
```

PCE includes the following SimpleDB demo mappings:

- **M\_AWS\_CREATEDOMAIN.** Creates a SimpleDB domain.
- **M\_AWS\_GET\_ATTRIBUTES.** Reads values from SimpleDB and writes to a file.
- **M\_AWS\_LIST\_DOMAINS.** Lists all domains in your SimpleDB instance and writes to a file.
- **M\_AWS\_PUT\_ATTRIBUTES.** Populates data from a sample Customer file into SimpleDB.
- **M\_AWS\_SELECT.** Selects the sample data from SimpleDB and writes to a file.

**Note:** To use these mappings, sign up for the Amazon SimpleDB service. SimpleDB is not included in the PCE AMI and involves additional cost.

- **DBMS\_Files demo mappings.** A set of mappings that demonstrate how to read data from and write data to a PowerCenter repository stored in a Microsoft SQL Server database.
  - **M\_SAMPLE\_Orders.** Reads data from a file and writes to a table in the Microsoft SQL Server repository database.
  - **M\_WS\_Product\_Info.** Uses a web service to read and write product data.
- **Salesforce demo mapping.** Includes a mapping that uses PowerExchange for Salesforce.com to demonstrate how to extract data from and write data to Salesforce objects.
  - **m\_sfacct.** Reads data from Salesforce.com and writes to a file.

**Note:** You will need your own Salesforce.com account in order to use this mapping.